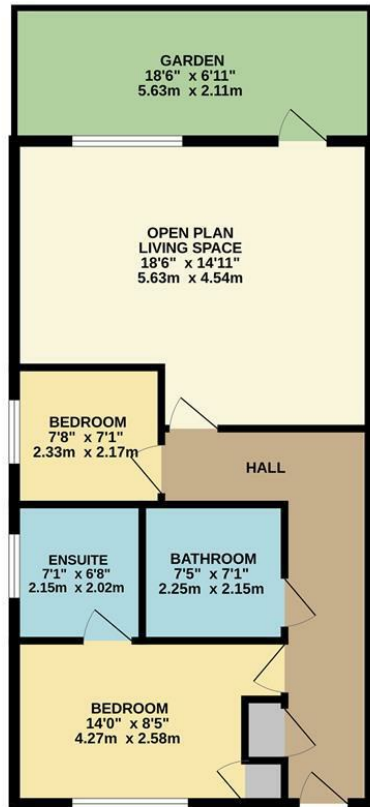


GROUND FLOOR
635 sq.ft. (59.0 sq.m.) approx.



TOTAL FLOOR AREA : 635 sq.ft. (59.0 sq.m.) approx.
Whilst every attempt has been made to ensure the accuracy of the floorplan contained here, measurements of doors, windows, rooms and any other items are approximate and no responsibility is taken for any error, omission or mis-statement. This plan is for illustrative purposes only and should be used as such by any prospective purchaser. The services, systems and appliances shown have not been tested and no guarantee as to their operability or efficiency can be given.
Made with Metropix ©2025

4 Avoncroft Court 29 Avenue
£1,100 Per Month

charlesrose.



Located on Avenue Road in the charming town of Leamington Spa, this immaculate ground floor apartment offers a perfect blend of comfort and convenience. With its prime location, residents will find themselves just a short stroll away from the vibrant town centre and the train station, making it an ideal choice for those who appreciate easy access to local amenities and transport links.

This apartment offers two bedrooms, including an ensuite shower room in the master, a spacious open plan lounge/kitchen, with integrated appliances and a main bathroom with a shower over the bath.

The property benefits from one secure gated parking space, providing peace of mind and ease of access.

Summary & Exclusions:

- Maximum number of tenants/occupiers is 2
- No students
- No sharers
- Available now
- Bills not included
- EPC C
- Council Tax C

charlesrose.

- 01926 832411
- info@charlesroseproperties.co.uk
- www.charlesroseproperties.co.uk

