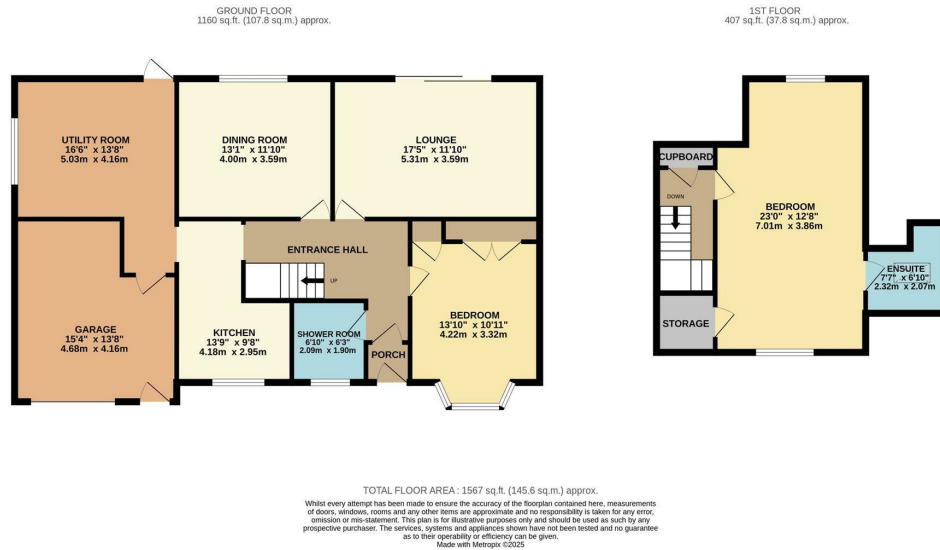


21 Kenilworth Road, Leamington Spa  
Offers Over £450,000

charlesrose.



A spacious two-bedroom dormer bungalow occupying an enviable position in North Leamington, enjoying attractive open views over fields to the front. Set on a generous plot with a large south-west facing rear garden, the property offers excellent potential for improvement and development (subject to planning).

The accommodation currently comprises a good-sized lounge, a separate dining room, a kitchen, a utility room, two double bedrooms, a ground-floor shower room, and a first-floor bathroom. Outside, the property benefits from an oversized garage and a driveway providing parking for several vehicles.

In need of modernisation throughout, this home presents an exciting opportunity to create a substantial family residence. Offered for sale with no onward chain.

charlesrose.

- 01926 832411
- hello@charlesrose.co.uk
- charlesrose.co.uk



