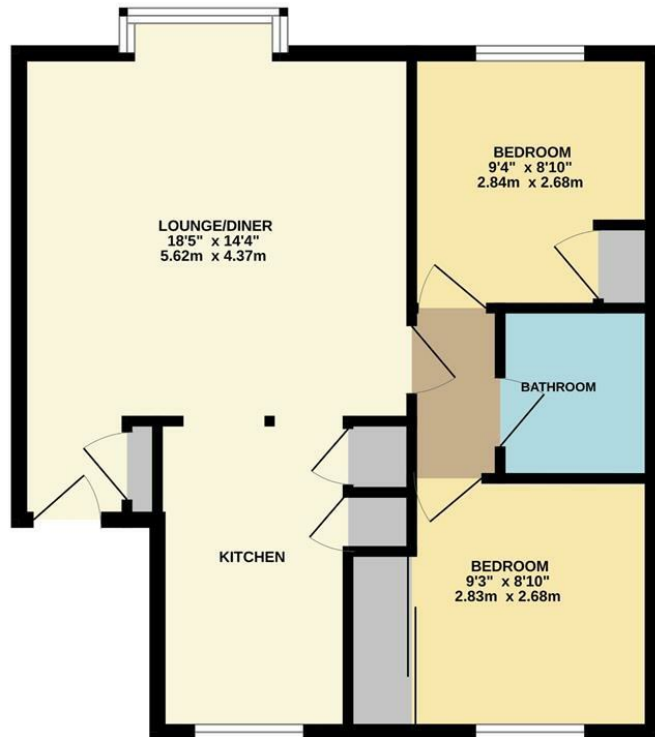


GROUND FLOOR
543 sq.ft. (50.4 sq.m.) approx.



TOTAL FLOOR AREA: 543 sq.ft. (50.4 sq.m.) approx.
Whilst every attempt has been made to ensure the accuracy of the floorplan contained here, measurements of doors, windows, rooms and any other items are approximate and no responsibility is taken for any error, omission or mis-statement. This plan is for illustrative purposes only and should be used as such by any prospective purchaser. The services, systems and appliances shown have not been tested and no guarantee as to their operability or efficiency can be given.
Made with Metropix 5/2023

17 Spring Pool, Warwick
£180,000

charlesrose.



A very nicely presented ground floor, two double bedroom apartment in Warwick Town Centre.

The accommodation comprises lounge dining room, which opens to the kitchen, two double bedrooms and bathroom. It is conveniently situated only 0.6 miles from Warwick Train Station and benefits from 2 parking spaces in a carport and gas central heating. Sold with no onward chain.

charlesrose.

- 01926 832411
- hello@charlesrose.co.uk
- charlesrose.co.uk

