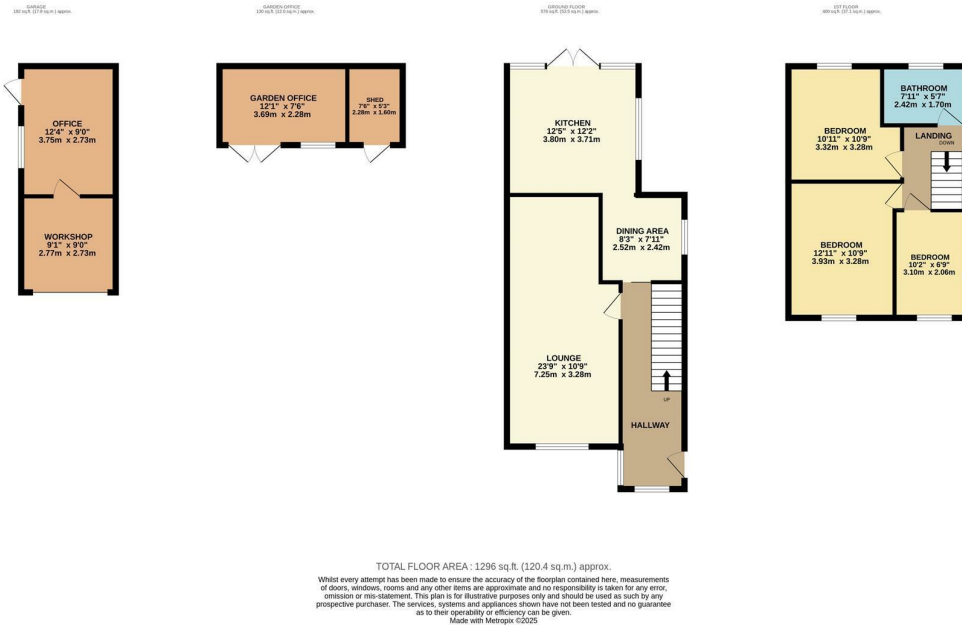


22 Handley Close, Coventry
£325,000

charlesrose.



This immaculately presented semi-detached home offers stylish and versatile living throughout. The ground floor features a welcoming hallway, a spacious lounge with a log burner, and a desirable kitchen/dining room, ideal for modern family living. Upstairs, there are three well-proportioned bedrooms and a contemporary bathroom. Outside, the property benefits from a driveway providing parking for two to three cars, a dedicated barbecue area perfect for entertaining, and a landscaped garden with a versatile pod currently divided into a hobby room and storage but adaptable to a variety of uses. The garage has been thoughtfully converted into a home office, while retaining external storage space.

charlesrose.

- 01926 832411
- hello@charlesrose.co.uk
- charlesrose.co.uk

