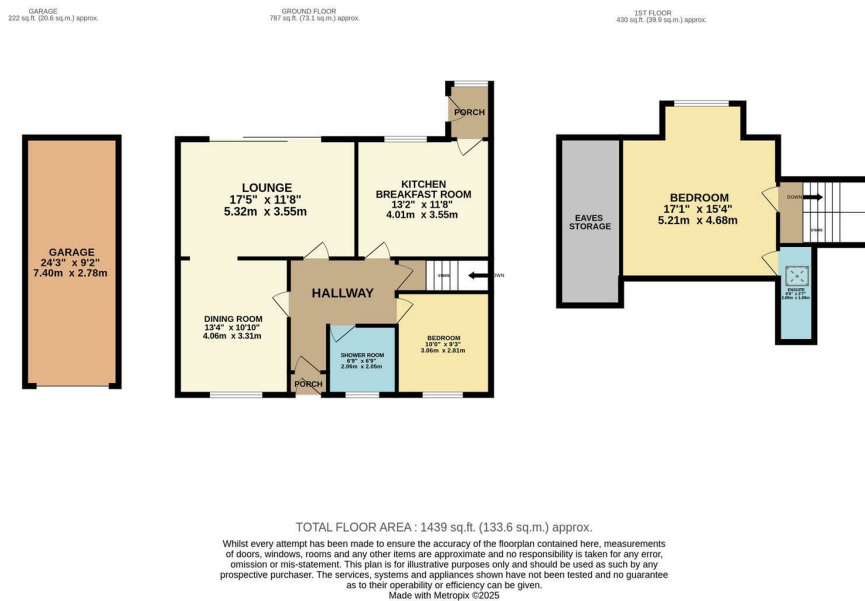


68 Rugby Road, Leamington Spa  
£450,000

charlesrose.



A spacious two-bedroom dormer bungalow occupying an enviable position in North Leamington, enjoying open views to the rear. Set on a generous plot with a large south-east facing garden, the property offers excellent potential for improvement and development (subject to planning). The accommodation includes a good-sized lounge, separate dining room, kitchen/breakfast room, two bedrooms, a ground-floor shower room, and an en-suite upstairs. Outside, there is an oversized garage, carport, and a driveway providing parking for several vehicles. In need of modernisation, the property is offered for sale with no onward chain.

charlesrose.

- 01926 832411
- hello@charlesrose.co.uk
- charlesrose.co.uk



