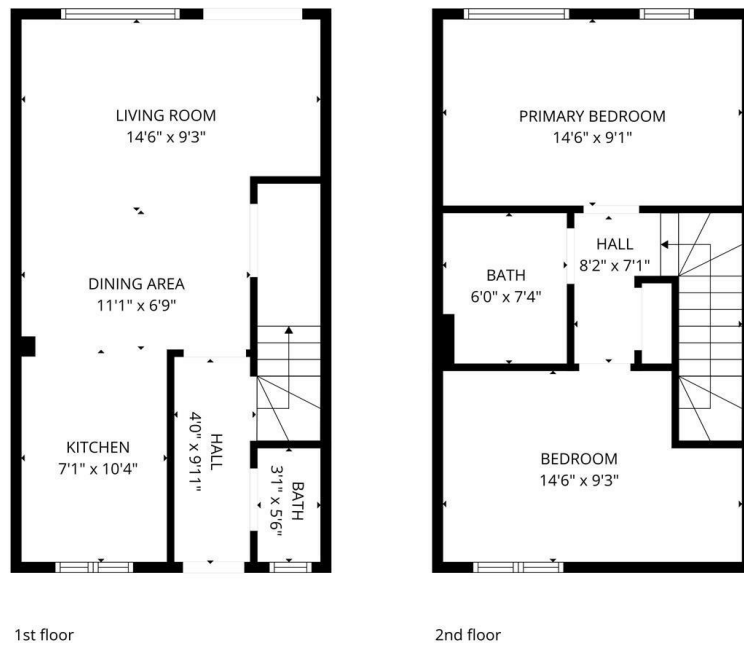


23 Renshaw Drive, Leamington Spa  
£75,000

charlesrose.



**TOTAL: 766 sq. ft**  
1st floor: 383 sq. ft, 2nd floor: 383 sq. ft  
EXCLUDED AREAS: WALLS: 82 sq. ft

Measurements are calculated accurately but are not guaranteed.



A well-presented two double bedroom home with open-plan living, private garden and allocated parking, ideally positioned within walking distance of Leamington Spa train station and the town centre.

It is understood that it is possible to buy as little as 25% of this shared ownership property and staircase it up to 100%.

charlesrose.

- 01926 832411
- hello@charlesrose.co.uk
- charlesrose.co.uk

