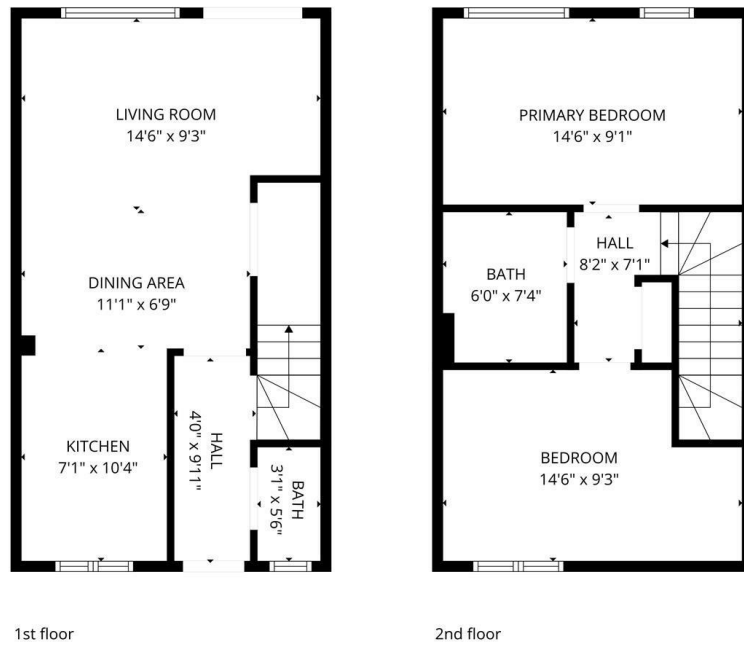


23 Renshaw Drive, Leamington Spa  
£300,000

charlesrose.



**TOTAL: 766 sq. ft**  
1st floor: 383 sq. ft, 2nd floor: 383 sq. ft  
EXCLUDED AREAS: WALLS: 82 sq. ft

Measurements are calculated accurately but are not guaranteed.



A well-presented two double bedroom home with open-plan living, private garden and allocated parking, ideally positioned within walking distance of Leamington Spa train station and the town centre.

charlesrose.

- 01926 832411
- hello@charlesrose.co.uk
- charlesrose.co.uk

