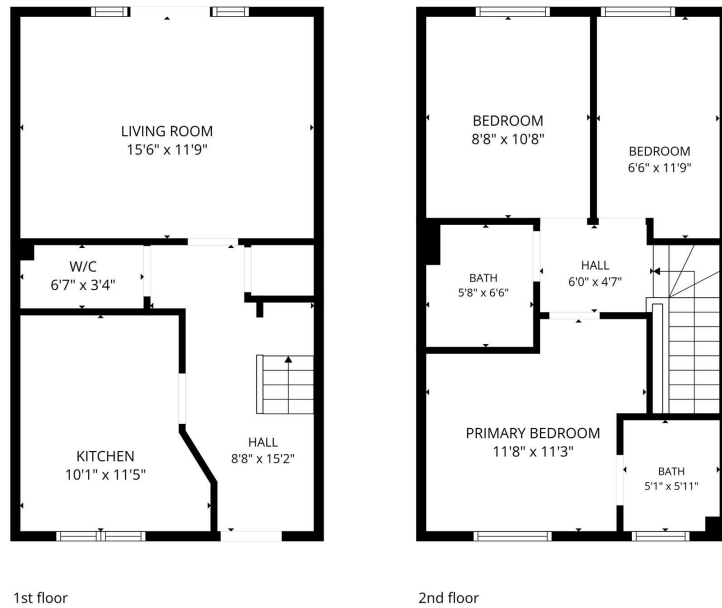


2 Hankinson Road, Warwick
Offers Over £325,000

charlesrose.



TOTAL: 845 sq. ft
1st floor: 424 sq. ft, 2nd floor: 421 sq. ft
EXCLUDED AREAS: "": 3 sq. ft, WALLS: 86 sq. ft
Measurements are calculated accurately but are not guaranteed.



Beautifully presented three-bedroom home offering approximately 845 sq ft of accommodation, including a spacious living room with French doors to the garden, modern kitchen/diner, principal bedroom with en-suite, private rear garden and allocated parking, all situated within a popular and well-connected Warwick development.

charlesrose.

- 01926 832411
- hello@charlesrose.co.uk
- charlesrose.co.uk

