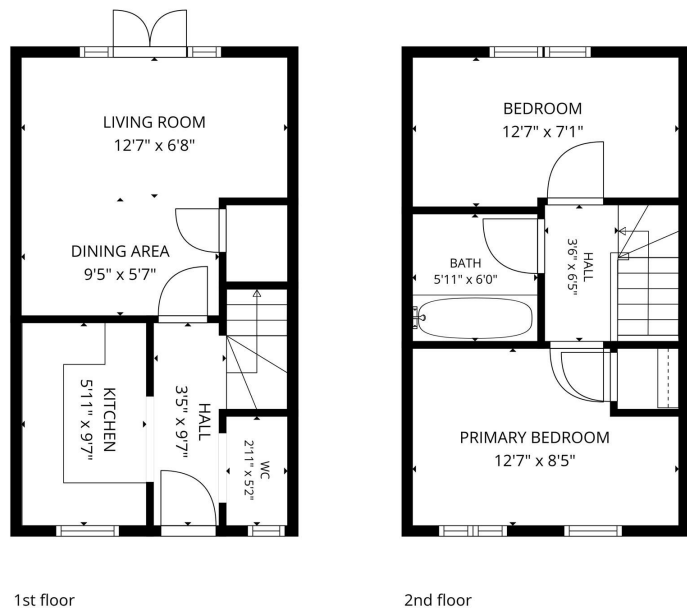


35 Hankinson Road, Warwick
£280,000

charlesrose.



TOTAL: 560 sq. ft
1st floor: 280 sq. ft, 2nd floor: 280 sq. ft
EXCLUDED AREAS: WALLS: 72 sq. ft
Measurements are calculated accurately but are not guaranteed.



Modern two-bedroom home with allocated parking and a private rear garden, conveniently situated within walking distance of Warwick town centre and both Warwick railway stations. Featuring a spacious living/dining room with French doors to the garden, contemporary kitchen, downstairs WC and family bathroom. Available with no onwads chain.

charlesrose.

- 01926 832411
- hello@charlesrose.co.uk
- charlesrose.co.uk

